

# Proposal Summary – Home of 2030

Add your names and ages here

**Aim** – describe what you are intending your 'Home of 2030' to be. Max 250 words

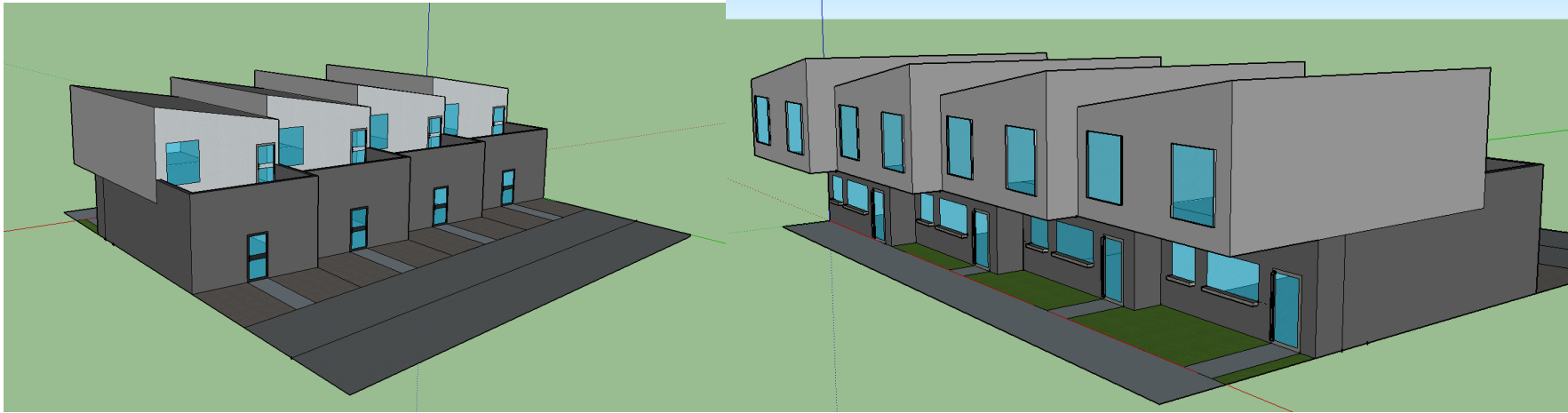
The aim of our eco- friendly 2030 house is to be able to use resources that have been previously recycled and other salvaged materials. We want to make it modernised with all new technologies that are available currently and are being developed or will be developed soon. We will strive to achieve our self-sustainability design as everyone should be able to support themselves, our house will use waste as fertiliser for the small farm that will support the people that live in this house. We will also have under floor heating with recycled polyethylene.

**Design** – look in depth about how you will make your idea feasible. This is where the engineering and digital students will need to work together to make this home the best it can be.

Prompt	Your summary	Research that fed into your summary
<b>Whole team</b> – what ideas have you taken from existing homes that are designed with the future in mind? <a href="#">link</a> <a href="#">link</a> <a href="#">link</a>	<a href="https://www.youtube.com/watch?v=uX_YO7BI4Ls">https://www.youtube.com/watch?v=uX_YO7BI4Ls</a> In existing homes, the features that we saw, liked and included, they were, large living space, compact houses, greenery, windows- natural light source,	
<b>Whole team</b> – what ideas have you taken from other people's ideas of homes of the future? <a href="#">link</a>	Large space but an affordable home. Energy sources that are renewable, so it is better for the environment. And location needs to be considered too, e.g. not a polluted area or not too close to the sea etc. Another suggestion that was considered was tesla home batteries so not every home is not relying on the same power source.	
<b>Whole team</b> – what laws do you need to consider in the building of this home? How will these laws impact your design decisions? <a href="#">Link</a>	<b>Legal requirement</b> <ul style="list-style-type: none"> <li>•planning permission from council</li> <li>•size and space allowed to use</li> <li>•location e.g. the houses are not allowed to be built in protected areas</li> <li>•At least one bedroom</li> <li>• a kitchen</li> <li>• one bathroom</li> <li>•living room</li> </ul>	
<b>Engineering</b> – what materials will you use to build the home? Make sure that these materials are sustainable and environmentally friendly.	<b>Material ideas</b> <ul style="list-style-type: none"> <li>•salvaged or reclaimed wood</li> <li>•concrete</li> </ul> <b>Maybe:</b> renewable energy / sources <ul style="list-style-type: none"> <li>•bamboo</li> <li>•recycled steel and copper</li> <li>•sheep's wool for insulator</li> <li>•containers self-sustainability</li> <li>•3 bedroom most common</li> </ul>	

<a href="#">link</a>		
<b>Engineering</b> – why is it important to consider air quality? How will you consider air quality?	Air quality is important because if the air quality is poor it will not be a nice place to live as in the air will be lots of carbon dioxide so it will make it more of a struggle to breathe.	
<b>Digital</b> – what SMART features will your home have? How will these work? Consider the inputs and the outputs for each. <a href="#">link</a>	<p><b>Inputs</b> Alexa, Siri, Google, Phone, remotes, wink hub 2, Samsung SmartThings hub,</p> <p><b>outputs</b> Hue light, smart locks, ring doorbells, apple TV, fridge, hive heating Smart, binds, LG foldable TV, sonos speakers, led light strip,</p> <p><b>Smart devices</b> dyson 360 eye robot</p>	
<b>Digital</b> – with all this SMART technology connect to the WWW how will you make sure that the home is safe from cybercrime? <a href="#">link</a>	We can protect from cybercrime by putting passwords on all devices in the building and changing default admin code to a strong password. We also can update devices on regular schedule when necessary to prevent cyber-attacks when the firmware is vulnerable. the final way of preventing cyber-attack is by disabling devices when not in use and adding push notifications to a phone when a new device is put on the network.	
Other research you have carried out		

**Design Documents** — *include your design documents here (scanned in sketches, concept boards...)*



**Final Proposal** – *you will need to show the finished work you have done for your project here.*

Description of your final idea. What design choices have you settled on and why?	Our final design is a terrace house that is efficient for people looking for their first house and for a space to stay while they save for another house or a at university or college. We have settled on this design as not many houses this age are made efficiently, quickly and innovative we are seeking to improve that with our house design. We have thought about how the customers will feel about the house and we hope that if it is made that it will not be sloppy, and we hope the builders will work hard to impress the customers and suit their desires.
Materials specification – identify the materials you have chosen to use and explain why you have chosen them	Salvaged or reclaimed wood  Recycled steel  Bamboo  Sheep's wool
Logo – insert your finished logo here.	